

# MASTER LEDtube Mains T5



## MASTER LEDtube 900mm HO 18.5W 840 T5

The new Philips Master LEDtube Mains T5 brings simplicity to your lighting project. You don't need to pay attention to the driver technology anymore. Thanks to a unique design, Philips MASTER LEDtube Mains T5 installs in luminaires operating on mains power connection. So simple to operate! . Perfectly safe, reliable & easy to install, the Philips MASTER LEDtube Mains T5 is the ideal alternative to standard fluorescent tubes to maximise value over lifetime with high energy savings and lower maintenance costs.

### Product data

General Information		LLMF at end of nominal lifetime (nom.)	
Cap base	G5 [G5]		70 %
Nominal lifetime	50,000 h	Flickering value (PstLM)	1
Switching Cycle	200,000	Stroboscopic effect	0.4
Lighting Technology	LED	Photobiological safety according to EN 62471	RG0
Flux measurement reference	Sphere	Operating and Electrical	
CE mark	Yes	Input frequency	50 to 60 Hz
EU RoHS compliant	Yes	Power Consumption	18.5 W
Light Technical		Lamp current (max.)	93 mA
Colour Code	840 [CCT of 4000K]	Lamp current (min.)	93 mA
Beam angle (nom.)	200 degree(s)	Lamp current (nom.)	93 mA
Luminous Flux	2,800 lm	Starting time (nom.)	0.5 s
Colour designation	Cool White (CW)	Warm-up time to 60% light	0.5 s
Correlated Colour Temperature	4000 K	Power Factor (Fraction)	0.92
Luminous efficacy (rated) (nom.)	151 lm/W	Voltage (nom.)	220-240 V
Colour consistency	<6	LED alternative to fluorescent lamp power	39 W
Colour rendering index (CRI)	80	Max. lamp no. on MCB B type 10A – Mains	41

# MASTER LEDtube Mains T5

Max. lamp no. on MCB B type 10A — EM ballast without Comp. Cap.	-
Max. lamp no. on MCB B type 10A — EM ballast with Comp. Cap.	-
Max. lamp no. on MCB B type 16A — Mains	66
Max. lamp no. on MCB B type 16A — EM ballast without Comp. Cap.	-
Max. lamp no. on MCB B type 16A — EM ballast with Comp. Cap.	-

## Temperature

Ambient temperature range	-20 to +45 °C
T-Case maximum (nom.)	60 °C

## Controls and Dimming

Dimmable	No
----------	----

## Mechanical and Housing

Lamp Finish	Frosted
Bulb material	Glass
Product length	900 mm

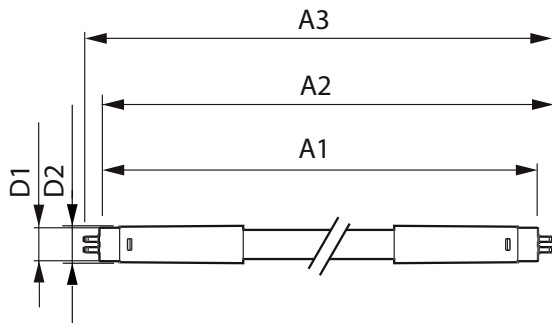
## Approval and Application

Energy Efficiency Class	D
Energy-saving product	Yes
Approval marks	RoHS compliance TUV CE marking KEMA Keur certificate
Energy consumption kWh/1,000 hours	19 kWh
EPREL registration number	1590869

## Product Data

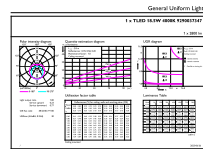
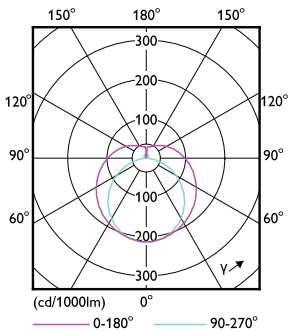
Order product name	MAS LEDtube 900mm HO 18.5W 840 T5
Full product name	MASTER LEDtube 900mm HO 18.5W 840 T5
Full EOC	872016927527000
Order code	27527000
Material no. (12 NC)	929003734702
SAP numerator – quantity per pack	1
EAN/UPC – Product/Case	8720169275270
Numerator – packs per outer box	10
EAN/UPC - Case	8720169275287

## Dimensional drawing



Product	D1	D2	A1	A2	A3
MAS LEDtube 900mm HO 18.5W 840 T5	19 mm	849 mm	856.1 mm	863.2 mm	

## Photometric data

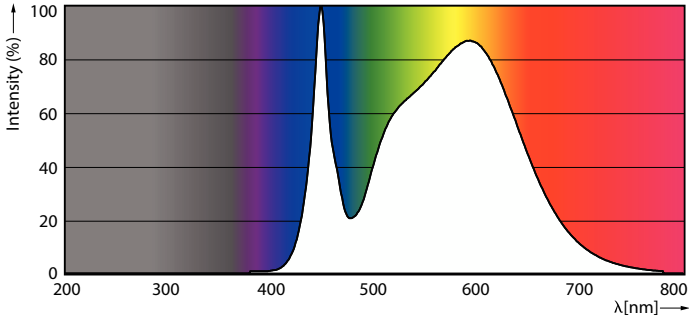


Light Distribution Diagram - MAS LEDtube 900mm HO 18.5W 840 T5

General uniform lighting - MAS LEDtube 900mm HO 18.5W 840 T5

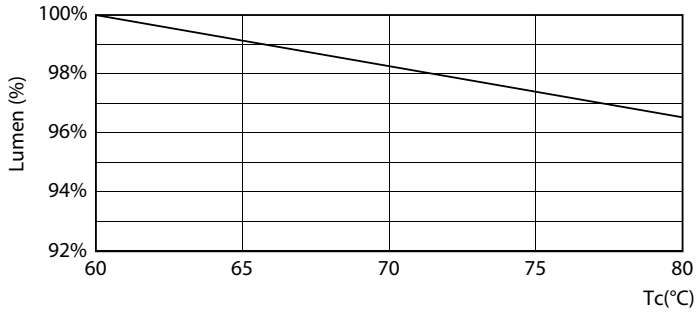
# MASTER LEDtube Mains T5

## Photometric data

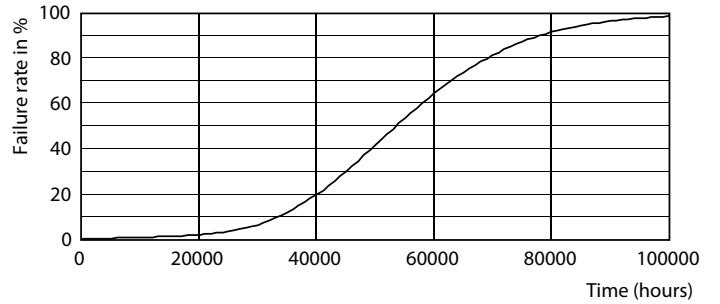


Spectral Power Distribution Colour - MAS LEDtube 900mm HO 18.5W 840 T5

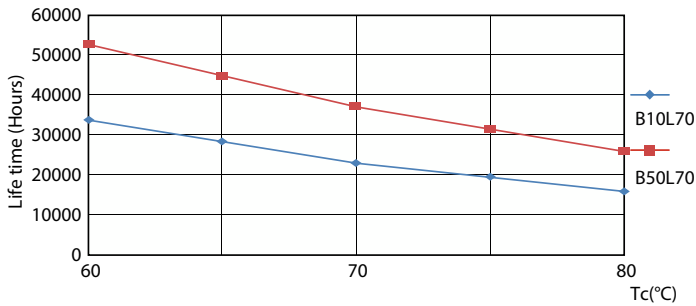
## Lifetime



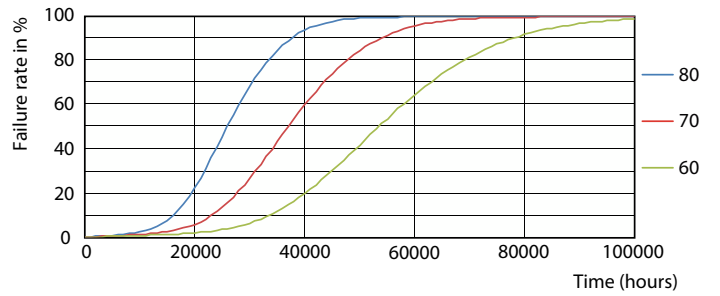
Lumen Maintenance Diagram - MAS LEDtube 900mm HO 18.5W 840 T5



Life Expectancy Diagram - MAS LEDtube 900mm HO 18.5W 840 T5



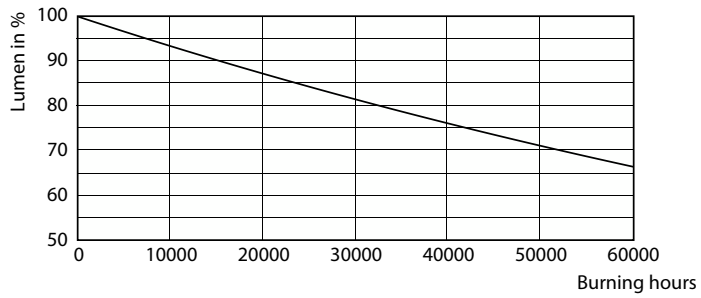
Life Expectancy Diagram - MAS LEDtube 900mm HO 18.5W 840 T5



Life Expectancy Diagram - MAS LEDtube 900mm HO 18.5W 840 T5

# MASTER LEDtube Mains T5

## Lifetime



Lumen Maintenance Diagram - MAS LEDtube 900mm HO 18.5W 840 T5

