



MASTER LEDtube Mains T5



MASTER LEDtube 900mm HO 18.5W 830 T5

The new Philips Master LEDtube Mains T5 brings simplicity to your lighting project. You don't need to pay attention to the driver technology anymore. Thanks to a unique design, Philips MASTER LEDtube Mains T5 installs in luminaires operating on mains power connection. So simple to operate! . Perfectly safe, reliable & easy to install, the Philips MASTER LEDtube Mains T5 is the ideal alternative to standard fluorescent tubes to maximise value over lifetime with high energy savings and lower maintenance costs.

Product data

General Information	
Cap base	G5 [G5]
Nominal lifetime	50,000 h
Switching Cycle	200,000
Lighting Technology	LED
Flux measurement reference	Sphere
CE mark	Yes
EU RoHS compliant	Yes
Light Technical	
Colour Code	830 [CCT of 3000K]
Beam angle (nom.)	200 degree(s)
Luminous Flux	2,600 lm
Colour designation	White (WH)
Correlated Colour Temperature	3000 K
Luminous efficacy (rated) (nom.)	140 lm/W
Colour consistency	<6
Colour rendering index (CRI)	80

LLMF at end of nominal lifetime (nom.)	70 %
Flickering value (PstLM)	1
Stroboscopic effect	0.4
Photobiological safety according to EN 62471	RG0
Operating and Electrical	
Input frequency	50 to 60 Hz
Power Consumption	18.5 W
Lamp current (max.)	93 mA
Lamp current (min.)	93 mA
Lamp current (nom.)	93 mA
Starting time (nom.)	0.5 s
Warm-up time to 60% light	0.5 s
Power Factor (Fraction)	0.92
Voltage (nom.)	220-240 V
LED alternative to fluorescent lamp power	39 W
Max. lamp no. on MCB B type 10A – Mains	41

MASTER LEDtube Mains T5

Max. lamp no. on MCB B type 10A — EM ballast without Comp. Cap.	-
Max. lamp no. on MCB B type 10A — EM ballast with Comp. Cap.	-
Max. lamp no. on MCB B type 16A — Mains	66
Max. lamp no. on MCB B type 16A — EM ballast without Comp. Cap.	-
Max. lamp no. on MCB B type 16A — EM ballast with Comp. Cap.	-

Temperature

Ambient temperature range	-20 to +45 °C
T-Case maximum (nom.)	60 °C

Controls and Dimming

Dimmable	No
----------	----

Mechanical and Housing

Lamp Finish	Frosted
Bulb material	Glass
Product length	900 mm

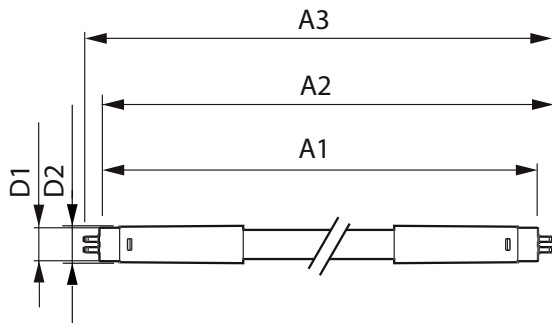
Approval and Application

Energy Efficiency Class	D
Energy-saving product	Yes
Approval marks	RoHS compliance TUV CE marking KEMA Keur certificate
Energy consumption kWh/1,000 hours	19 kWh
EPREL registration number	1590870

Product Data

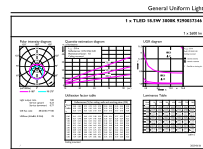
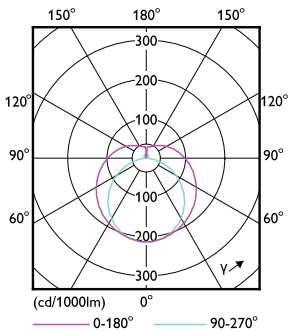
Order product name	MAS LEDtube 900mm HO 18.5W 830 T5
Full product name	MASTER LEDtube 900mm HO 18.5W 830 T5
Full EOC	872016927525600
Order code	27525600
Material no. (12 NC)	929003734602
SAP numerator – quantity per pack	1
EAN/UPC – Product/Case	8720169275256
Numerator – packs per outer box	10
EAN/UPC - Case	8720169275263

Dimensional drawing



Product	D1	D2	A1	A2	A3
MAS LEDtube 900mm HO 18.5W 830 T5	19 mm	849 mm	856.1 mm	863.2 mm	

Photometric data

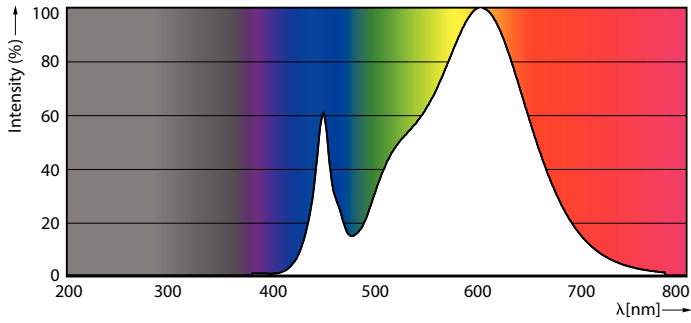


Light Distribution Diagram - MAS LEDtube 900mm HO 18.5W 830 T5

General uniform lighting - MAS LEDtube 900mm HO 18.5W 830 T5

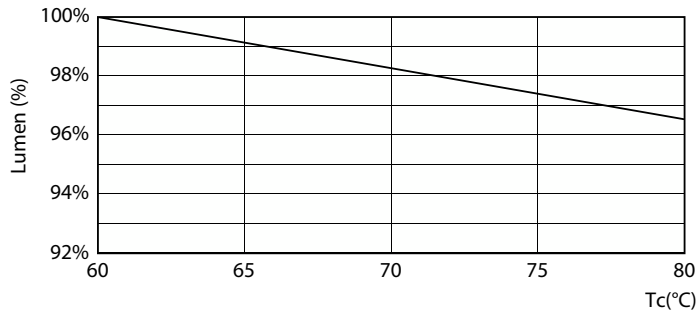
MASTER LEDtube Mains T5

Photometric data

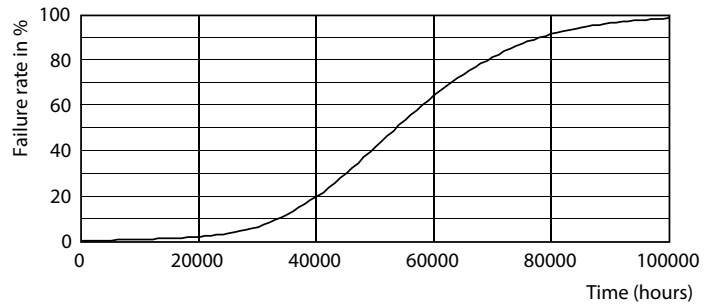


Spectral Power Distribution Colour - MAS LEDtube 900mm HO 18.5W 830 T5

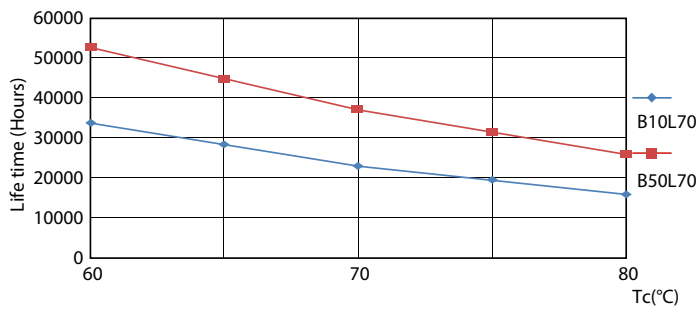
Lifetime



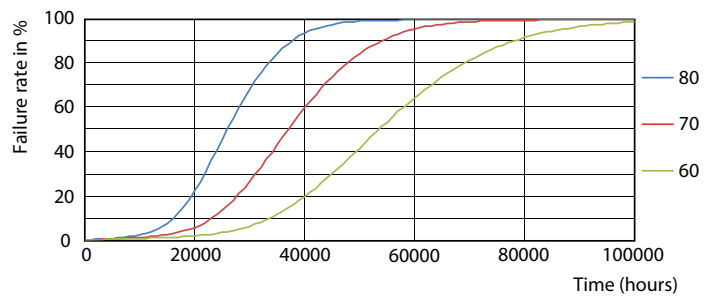
Lumen Maintenance Diagram - MAS LEDtube 900mm HO 18.5W 830 T5



Life Expectancy Diagram - MAS LEDtube 900mm HO 18.5W 830 T5



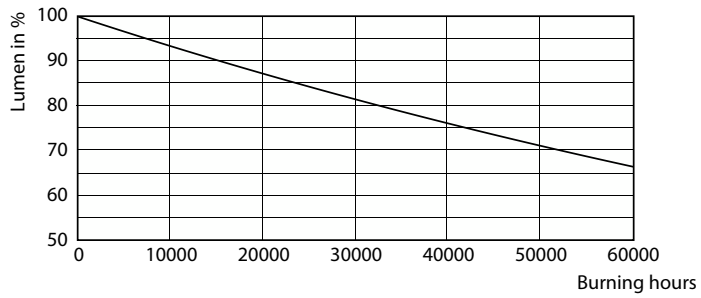
Life Expectancy Diagram - MAS LEDtube 900mm HO 18.5W 830 T5



Life Expectancy Diagram - MAS LEDtube 900mm HO 18.5W 830 T5

MASTER LEDtube Mains T5

Lifetime



Lumen Maintenance Diagram - MAS LEDtube 900mm HO 18.5W 830 T5

