



# MASTER LEDtube InstantFit HF T5



## Master LEDtube HF 900mm HO 18.5W 865 T5

The Philips MASTER LEDtube integrates an LED light source into a traditional fluorescent form factor. Its unique design creates a perfectly uniform visual appearance, which cannot be distinguished from traditional fluorescents. These T5 lighting tubes are the right choice for absolute performance and are designed to stand up to everyday conditions. Unparalleled savings, thanks to low energy consumption and an exceptionally long lifetime, make these T5 LED tubes the choice for every demanding applications.

### Product data

General Information	
Cap base	G5 [G5]
Nominal lifetime	60,000 h
Switching Cycle	50,000
Lighting Technology	LED
Flux measurement reference	Sphere
CE mark	Yes
EU RoHS compliant	Yes

Light Technical	
Colour Code	865 [CCT of 6500K]
Beam angle (nom.)	200 degree(s)
Luminous Flux	2,800 lm
Colour designation	Cool Daylight
Correlated Colour Temperature	6500 K
Luminous efficacy (rated) (nom.)	151 lm/W
Colour consistency	<6
Colour rendering index (CRI)	80

LLMF at end of nominal lifetime (nom.)	70 %
Photobiological safety according to EN 62471	RG0

Operating and Electrical	
Line Frequency	30K to 100K Hz
Input frequency	30 K to 100 K Hz
Power Consumption	18.5 W
Lamp current (max.)	350 mA
Lamp current (min.)	120 mA
Starting time (nom.)	0.5 s
Warm-up time to 60% light	0.5 s
Power Factor (Fraction)	0.9
Voltage (nom.)	60-100 V
LED alternative to fluorescent lamp power	39 W
Max. lamp no. on MCB B type 10A — Mains	-
Max. lamp no. on MCB B type 10A — EM ballast without Comp. Cap.	-

# MASTER LEDtube InstantFit HF T5

Max. lamp no. on MCB B type 10A — EM ballast with Comp. Cap.	-
Max. lamp no. on MCB B type 16A — Mains	-
Max. lamp no. on MCB B type 16A — EM ballast without Comp. Cap.	-
Max. lamp no. on MCB B type 16A — EM ballast with Comp. Cap.	-

## Temperature

Ambient temperature range	-20°C to 45°C
T-Case maximum (nom.)	60 °C

## Controls and Dimming

Dimmable	Yes – Check ballast compatibility
----------	-----------------------------------

## Mechanical and Housing

Lamp Finish	Frosted
Bulb material	Glass
Product length	900 mm

## Approval and Application

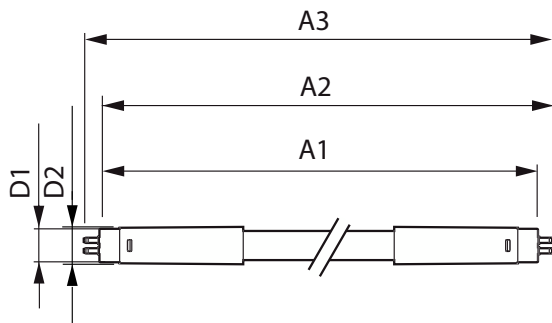
Energy Efficiency Class	D
-------------------------	---

Energy-saving product	Yes
Approval marks	RoHS compliance TUV CE marking KEMA Keur certificate
Energy consumption kWh/1,000 hours	19 kWh
EPREL registration number	1407662

## Product Data

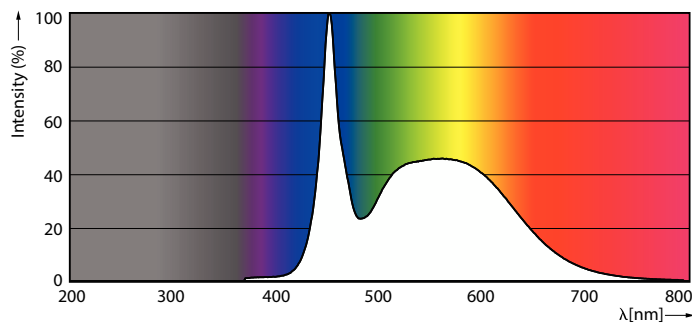
Order product name	MAS LEDtube HF 900mm HO 18.5W 865 T5
Full product name	Master LEDtube HF 900mm HO 18.5W 865 T5
Full EOC	872016916317100
Order code	16317100
Material no. (12 NC)	929003596702
SAP numerator – quantity per pack	1
EAN/UPC – Product/Case	8720169163171
Numerator – packs per outer box	10
EAN/UPC - Case	8720169163188

## Dimensional drawing

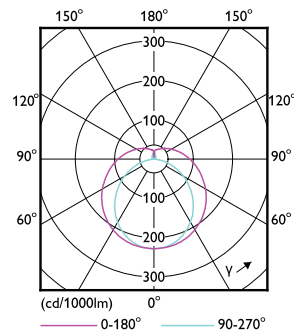


Product	D1	D2	A1	A2	A3
MAS LEDtube HF 900mm HO 18.5W 865 T5	15.5 mm	16/19 mm	849 mm	856 mm	863 mm

## Photometric data



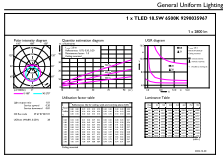
Spectral Power Distribution Colour



Light Distribution Diagram

# MASTER LEDtube InstantFit HF T5

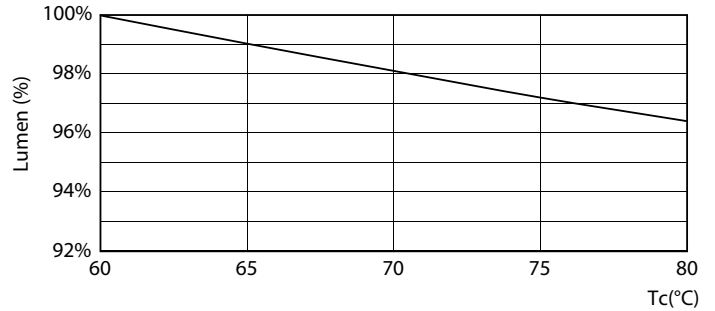
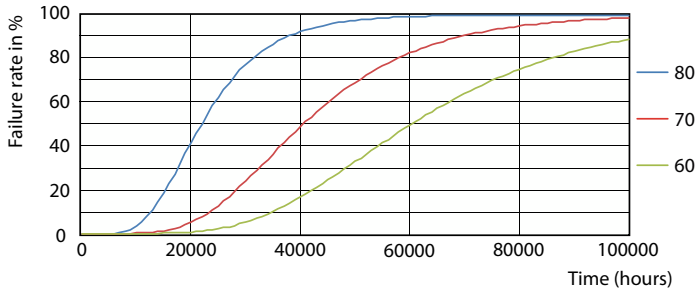
## Photometric data



© 2022 Phoenix LED GmbH - Page 10 of 12

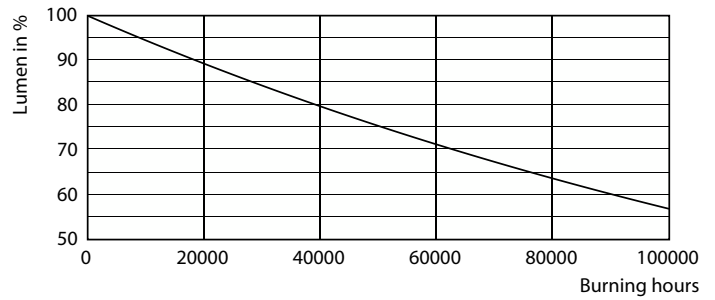
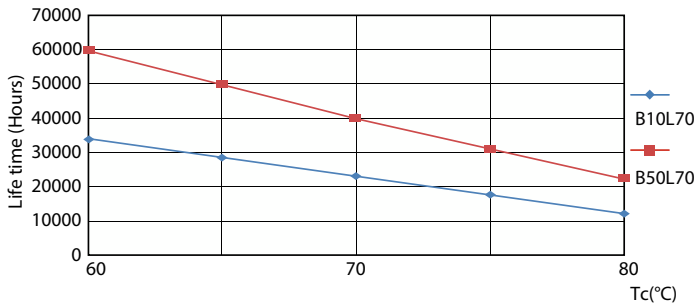
General uniform lighting - MAS LEDtube HF 900mm HO 18.5W 865 T5

## Lifetime



Life Expectancy Diagram - MAS LEDtube HF 900mm HO 18.5W 865 T5

Lumen Maintenance Diagram



Life Expectancy Diagram - MAS LEDtube HF 900mm HO 18.5W 865 T5

Lumen Maintenance Diagram - MAS LEDtube HF 900mm HO 18.5W 865 T5

# MASTER LEDtube InstantFit HF T5

## Lifetime



Life Expectancy Diagram - MAS LEDtube HF 900mm HO 18.5W 865 T5

