



CorePro LED PLT 4P



CorePro LED PLT HF 6.5W 840 4P GX24q-2

The CorePro LED PLT 4P integrates a LED light source into a traditional fluorescent form factor. This product is the ideal solution for uplampping in general lighting applications: it meets basic lighting requirements, offers significant energy savings, and is environmentally friendly.

Product data

General Information			
Cap base	GX24q-2	Input frequency	20 K–80 K Hz
Nominal lifetime	30,000 h	Power Consumption	6.5 W
Switching Cycle	200,000	Lamp current (max.)	300 mA
Lighting Technology	LED	Lamp current (min.)	150 mA
Flux measurement reference	Sphere	Starting time (nom.)	0.5 s
CE mark	Yes	Warm-up time to 60% light	0.5 s
EU RoHS compliant	Yes	Power Factor (Fraction)	0.9
		Voltage (nom.)	20–60 V
		LED alternative to fluorescent lamp power	18 W
		Inrush current at mains	-
		Max. lamp no. on MCB B type 10A — Mains	-
		Max. lamp no. on MCB B type 10A — EM ballast without Comp. Cap.	-
		Max. lamp no. on MCB B type 10A — EM ballast with Comp. Cap.	-
		Max. lamp no. on MCB B type 16A — Mains	-
		Max. lamp no. on MCB B type 16A — EM ballast without Comp. Cap.	-
		Max. lamp no. on MCB B type 16A — EM ballast with Comp. Cap.	-
		Ballast Compatibility	HF
Light Technical			
Colour Code	840 [CCT of 4000K]		
Beam angle (nom.)	120 degree(s)		
Luminous Flux	800 lm		
Colour designation	Cool White (CW)		
Correlated Colour Temperature	4000 K		
Luminous efficacy (rated) (nom.)	123 lm/W		
Colour consistency	<6		
Colour rendering index (CRI)	82		
LLMF at end of nominal lifetime (nom.)	70 %		
Photobiological safety according to EN 62471	RG1		
Operating and Electrical			
Line Frequency	20K–80K Hz		

CorePro LED PLT 4P

Temperature

Ambient temperature range	-20°C to 35°C
T-Case maximum (nom.)	65°C

Controls and Dimming

Dimmable	No
----------	----

Mechanical and Housing

Lamp Finish	Frosted
Bulb material	Plastic
Product length	100 mm
Bulb shape	PL-T

Approval and Application

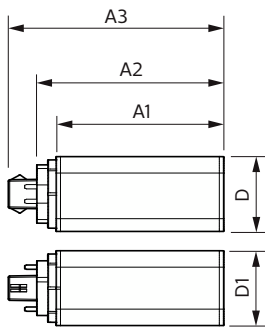
Energy Efficiency Class	E
Energy-saving product	Yes
Approval marks	RoHS compliance TUV CE marking KEMA Keur certificate

Energy consumption kWh/1,000 hours	7 kWh
EPREL registration number	1361421

Product Data

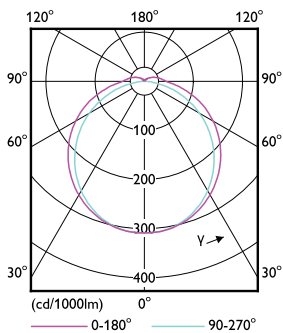
Order product name	CorePro LED PLT HF 6.5W 840 4P GX24q-2
Full product name	CorePro LED PLT HF 6.5W 840 4P GX24q-2
Full EOC	871951448778900
Order code	48778900
Material no. (12 NC)	929003576402
SAP numerator – quantity per pack	1
EAN/UPC – Product/Case	8719514487789
Numerator – packs per outer box	20
EAN/UPC - Case	8719514487796

Dimensional drawing

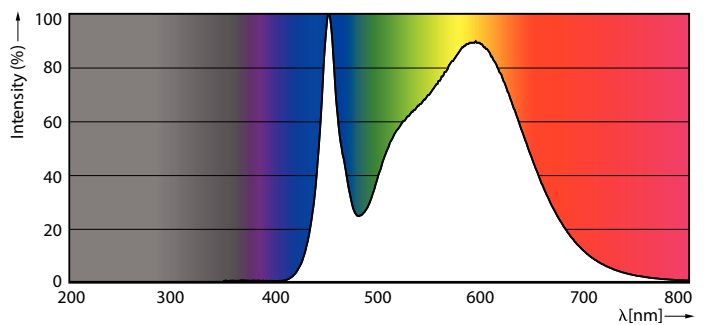


Product	D1	D2	A1	A2	A3
CorePro LED PLT HF 6.5W 840 4P GX24q-2	42 mm		93 mm	103 mm	119 mm

Photometric data



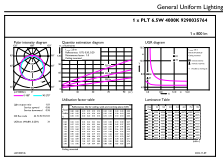
Light Distribution Diagram - CorePro LED PLT HF 6.5W 840 4P GX24q-2



Spectral Power Distribution Colour - CorePro LED PLT HF 6.5W 840 4P GX24q-2

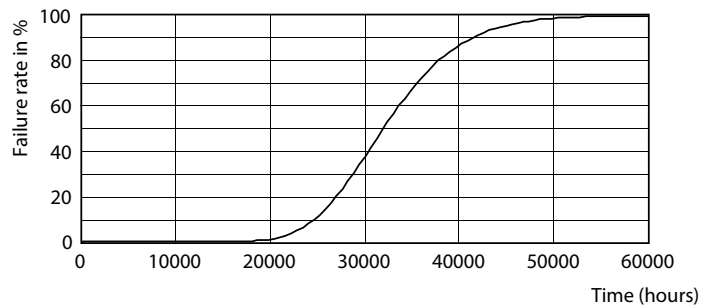
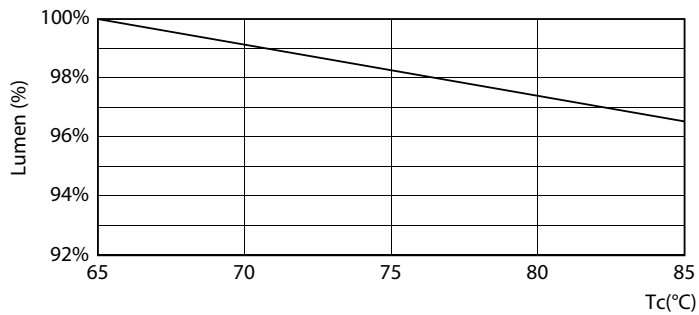
CorePro LED PLT 4P

Photometric data



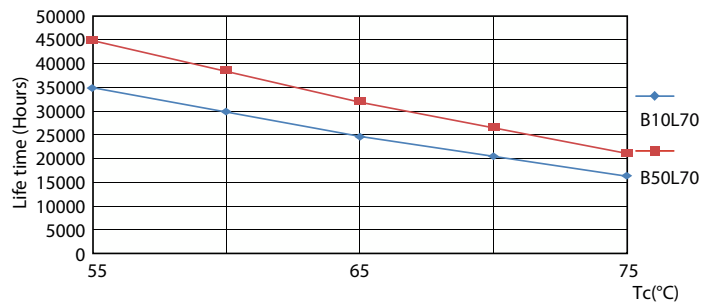
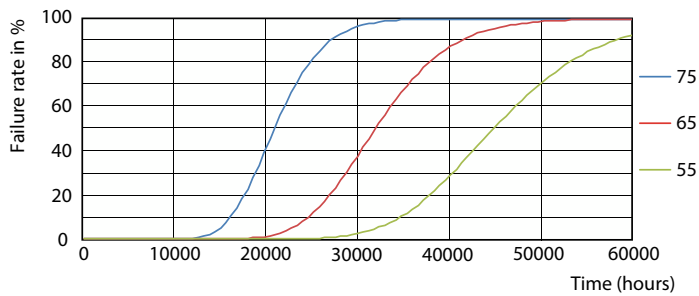
General uniform lighting - CorePro LED PLT HF 6.5W 840 4P GX24q-2

Lifetime



Lumen Maintenance Diagram - CorePro LED PLT HF 6.5W 840 4P GX24q-2

Life Expectancy Diagram - CorePro LED PLT HF 6.5W 840 4P GX24q-2

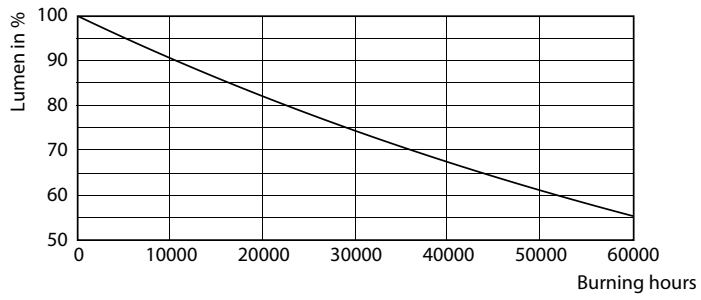


Life Expectancy Diagram - CorePro LED PLT HF 6.5W 840 4P GX24q-2

Life Expectancy Diagram - CorePro LED PLT HF 6.5W 840 4P GX24q-2

CorePro LED PLT 4P

Lifetime



Lumen Maintenance Diagram - CorePro LED PLT HF 6.5W 840 4P GX24q-2

