



# CorePro LED PLL



## CorePro LED PLL HF 8W 840 4P 2G11

Philips CorePro LED PLL is the ideal uplamping solution for downlights & luminaires in a wide range of general lighting applications. It integrates a LED light source into a traditional fluorescent form factor to offer superb energy savings over a lifetime that's twice as long as fluorescent alternatives.

### Product data

General Information	
Cap base	2G11
Nominal lifetime	30,000 h
Switching Cycle	50,000
Lighting Technology	LED
Flux measurement reference	Sphere
EU RoHS compliant	Yes

Light Technical	
Colour Code	840 [CCT of 4000K]
Beam angle (nom.)	160 degree(s)
Luminous Flux	1,000 lm
Colour designation	Cool White (CW)
Correlated Colour Temperature	4000 K
Luminous efficacy (rated) (nom.)	125 lm/W
Colour consistency	<6
Colour rendering index (CRI)	80
LLMF at end of nominal lifetime (nom.)	70 %
Photobiological safety according to EN 62471	RGO

Operating and Electrical	
Line Frequency	20K-80K Hz
Input frequency	20 K-80 K Hz

Power Consumption	8 W
Lamp current (max.)	500 mA
Lamp current (min.)	150 mA
Starting time (nom.)	0.5 s
Warm-up time to 60% light	0.5 s
Power Factor (Fraction)	0.9
Voltage (nom.)	20-60 V
LED alternative to fluorescent lamp power	18 W
Inrush current at mains	-
Max. lamp no. on MCB B type 10A — Mains	-
Max. lamp no. on MCB B type 10A — EM ballast without Comp. Cap.	-
Max. lamp no. on MCB B type 10A — EM ballast with Comp. Cap.	-
Max. lamp no. on MCB B type 16A — Mains	-
Max. lamp no. on MCB B type 16A — EM ballast without Comp. Cap.	-
Max. lamp no. on MCB B type 16A — EM ballast with Comp. Cap.	-
Ballast Compatibility	HF

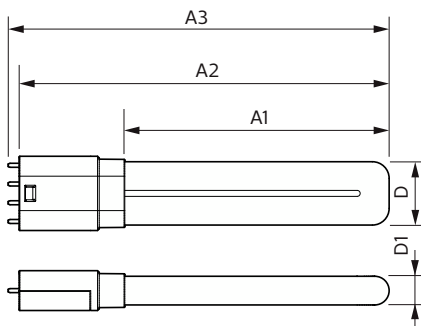
Temperature	
Ambient temperature range	-20°C to 45°C

# CorePro LED PLL

T-Case maximum (nom.)	70 °C
<b>Controls and Dimming</b>	
Dimmable	No
<b>Mechanical and Housing</b>	
Lamp Finish	Frosted
Bulb material	Glass
Product length	200 mm
Bulb shape	PL-L
<b>Approval and Application</b>	
Energy Efficiency Class	E
Energy-saving product	Yes
Approval marks	RoHS compliance TUV CE marking KEMA Keur certificate
Energy consumption kWh/1,000 hours	8 kWh

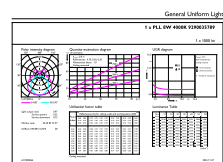
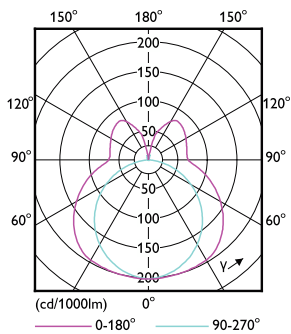
EPREL registration number	1370820
<b>Product Data</b>	
Order product name	CorePro LED PLL HF 8W 840 4P 2G11
Full product name	CorePro LED PLL HF 8W 840 4P 2G11
Full EOC	871951448678200
Order code	48678200
Material no. (12 NC)	929003578902
SAP numerator – quantity per pack	1
EAN/UPC – Product/Case	8719514486782
Numerator – packs per outer box	10
EAN/UPC - Case	8719514486799

## Dimensional drawing



Product	D1	D2	A1	A2	A3
CorePro LED PLL HF 8W 840 4P 2G11	17 mm		155 mm	217 mm	224 mm

## Photometric data

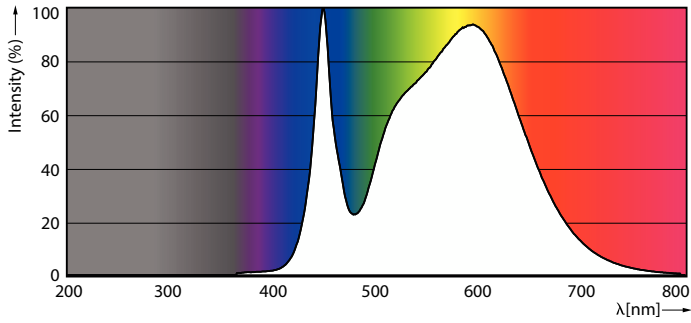


Light Distribution Diagram - CorePro LED PLL HF 8W 840 4P 2G11

General uniform lighting - CorePro LED PLL HF 8W 840 4P 2G11

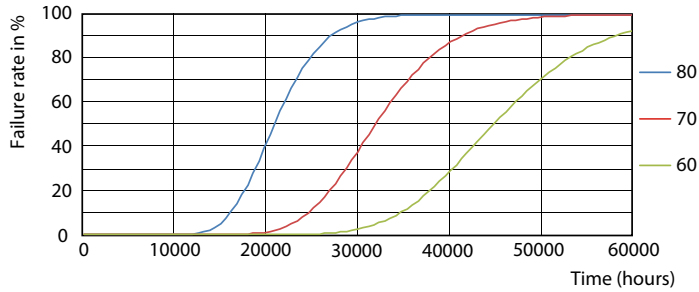
# CorePro LED PLL

## Photometric data

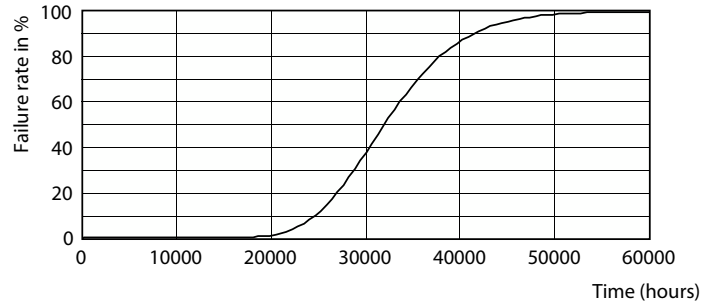


Spectral Power Distribution Colour - CorePro LED PLL HF 8W 840 4P 2G11

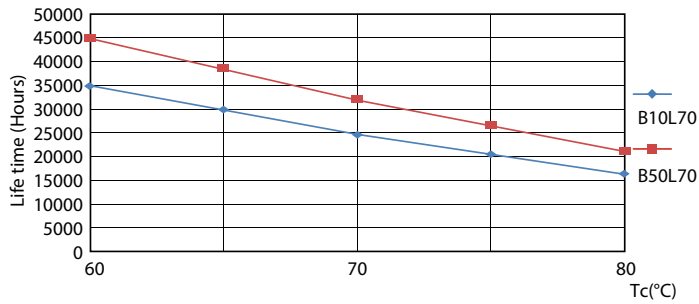
## Lifetime



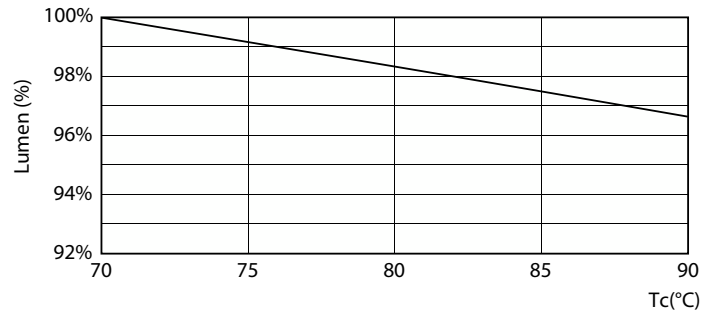
Life Expectancy Diagram - CorePro LED PLL HF 8W 840 4P 2G11



Life Expectancy Diagram - CorePro LED PLL HF 8W 840 4P 2G11



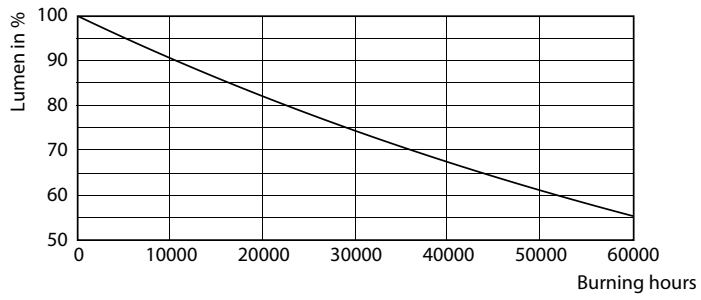
Life Expectancy Diagram - CorePro LED PLL HF 8W 840 4P 2G11



Lumen Maintenance Diagram - CorePro LED PLL HF 8W 840 4P 2G11

# CorePro LED PLL

## Lifetime



Lumen Maintenance Diagram - CorePro LED PLL HF 8W 840 4P 2G11

