



MASTER Value LEDtube T8



MASTER LEDtube VLE 1500mm UO 23W 830 T8

A high-performance LED solution, the professional MASTER Value LED tube is ideal for replacing T8 fluorescent lamps using EM ballast or installing directly on the mains. This product provides an optimal combination of value and performance – for use in all general lighting, office, industry, retail and hospitality applications. The unique design of this LED T8 tube light offers wide compatibility, safety and fast installation, as well as instant energy savings.

Product data

General Information	
Cap base	G13 [Medium Bi-Pin Fluorescent]
Nominal lifetime	60,000 h
Switching Cycle	200,000
Lighting Technology	LED
Flux measurement reference	Sphere
CE mark	Yes
EU RoHS compliant	Yes

Light Technical	
Colour Code	830 [CCT of 3000K]
Beam angle (nom.)	190 degree(s)
Luminous Flux	3,400 lm
Colour designation	White (WH)
Correlated Colour Temperature	3000 K
Luminous efficacy (rated) (nom.)	147.00 lm/W
Colour consistency	<6
Colour rendering index (CRI)	80
LLMF at end of nominal lifetime (nom.)	70 %

Flickering value (PstLM)	1
Stroboscopic effect	0.4
Photobiological safety according to EN 62471	RG0

Operating and Electrical	
Line Frequency	50 to 60 Hz
Input frequency	50 to 60 Hz
Power Consumption	23 W
Lamp current (max.)	108 mA
Lamp current (min.)	99 mA
Starting time (nom.)	0.5 s
Warm-up time to 60% light	0.5 s
Power Factor (Fraction)	0.9
Voltage (nom.)	220-240 V
LED alternative to fluorescent lamp power	58 W
Max. lamp no. on MCB B type 10A – Mains	65
Max. lamp no. on MCB B type 10A – EM ballast without Comp. Cap.	65

MASTER Value LEDtube T8

Max. lamp no. on MCB B type 10A — EM ballast with Comp. Cap.	10
Max. lamp no. on MCB B type 16A — Mains	100
Max. lamp no. on MCB B type 16A — EM ballast without Comp. Cap.	100
Max. lamp no. on MCB B type 16A — EM ballast with Comp. Cap.	16

Temperature

Ambient temperature range	-20°C to 45°C
T-Case maximum (nom.)	65 °C

Controls and Dimming

Dimmable	No
----------	----

Mechanical and Housing

Lamp Finish	Frosted
Bulb material	Glass
Product length	1,500 mm

Approval and Application

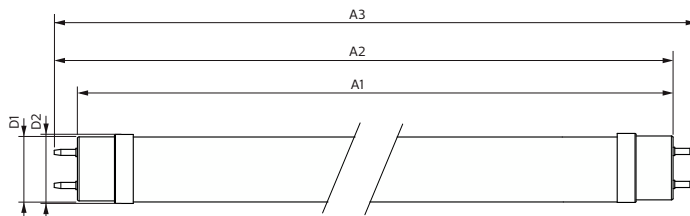
Energy Efficiency Class	D
-------------------------	---

Energy-saving product	Yes
Approval marks	RoHS compliance TUV CE marking KEMA Keur certificate
Energy consumption kWh/1,000 hours	23 kWh
EPREL registration number	1095874

Product Data

Order product name	MAS LEDtube VLE 1500mm UO 23W 830 T8
Full product name	MASTER LEDtube VLE 1500mm UO 23W 830 T8
Full EOC	871951431686700
Order code	31686700
Material no. (12 NC)	929002997902
SAP numerator – quantity per pack	1
EAN/UPC — Product/Case	8719514316867
Numerator – packs per outer box	10
EAN/UPC - Case	8719514316874

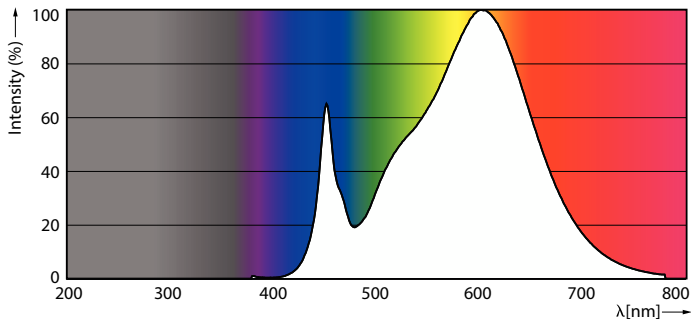
Dimensional drawing



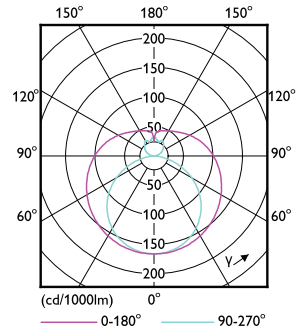
Product	D1	D2	A1	A2	A3
MAS LEDtube VLE 1500mm UO 23W 830 T8	25.8 mm	28 mm	1,498.8 mm	1,505.9 mm	1,513 mm

MASTER Value LEDtube T8

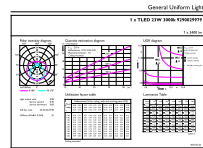
Photometric data



Spectral Power Distribution Colour - MAS LEDtube VLE 1500mm UO 23W 830 T8

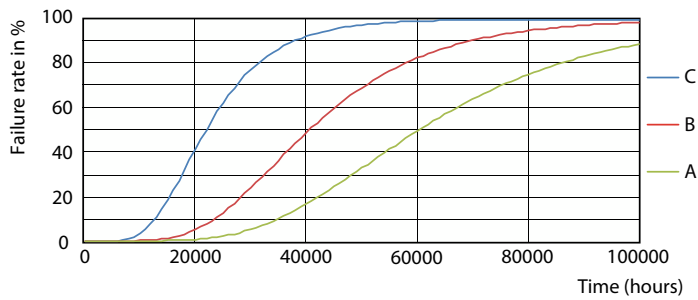


Light Distribution Diagram - MAS LEDtube VLE 1500mm UO 23W 830 T8

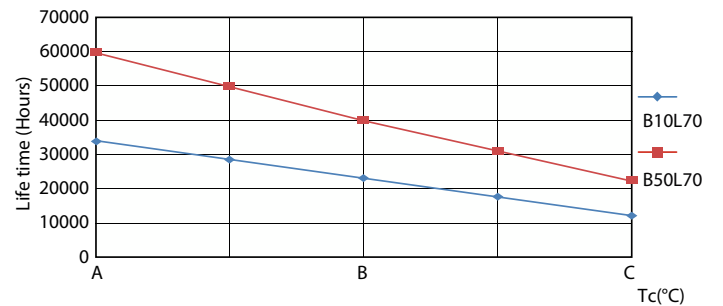


General uniform lighting - MAS LEDtube VLE 1500mm UO 23W 830 T8

Lifetime



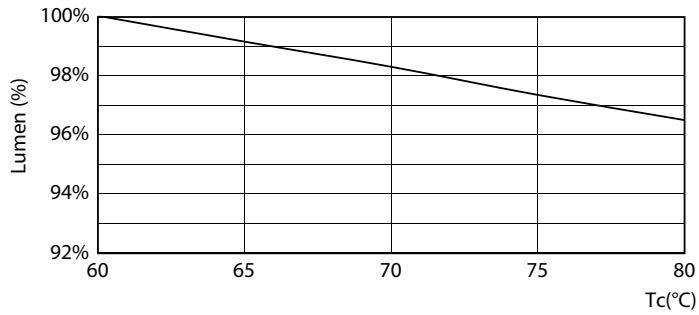
Life Expectancy Diagram - MAS LEDtube VLE 1500mm UO 23W 830 T8



Life Expectancy Diagram - MAS LEDtube VLE 1500mm UO 23W 830 T8

MASTER Value LEDtube T8

Lifetime



Lumen Maintenance Diagram - MAS LEDtube VLE 1500mm UO 23W 830 T8

Lumen Maintenance Diagram - MAS LEDtube VLE 1500mm UO 23W 830 T8



Life Expectancy Diagram - MAS LEDtube VLE 1500mm UO 23W 830 T8

