



MASTER LEDtube EM/ Mains



MASTER LEDtube 1500mm UO 21.7W 840 T8

The Philips MASTER LEDtube integrates a LED light source into a traditional fluorescent form factor. Its unique design creates a perfectly uniform visual appearance which cannot be distinguished from traditional fluorescent. This product is the ideal solution for up lighting in general lighting applications.

Warnings and Safety

• -

Product data

General Information	
Cap base	G13 ROT
Nominal lifetime	75,000 h
Switching Cycle	200,000
Lighting Technology	LED
Flux measurement reference	Sphere
CE mark	Yes
EU RoHS compliant	Yes

Light Technical	
Colour Code	840 [CCT of 4000K]
Beam angle (nom.)	160 degree(s)
Luminous Flux	3,700 lm
Colour designation	Cool White (CW)
Correlated Colour Temperature	4000 K
Luminous efficacy (rated) (nom.)	170 lm/W
Colour consistency	<6
Colour rendering index (CRI)	80

LLMF at end of nominal lifetime (nom.)	70 %
Flickering value (PstLM)	0.5
Stroboscopic effect	0.2
Photobiological safety according to EN 62471	RG0

Operating and Electrical	
Line Frequency	50 to 60 Hz
Input frequency	50 to 60 Hz
Power Consumption	21.7 W
Lamp current (max.)	108 mA
Lamp current (min.)	89 mA
Starting time (nom.)	0.5 s
Warm-up time to 60% light	0.5 s
Power Factor (Fraction)	0.9
Voltage (nom.)	220-240 V
LED alternative to fluorescent lamp power	58 W
Inrush current at mains	8.4
Max. lamp no. on MCB B type 10A — Mains	70

MASTER LEDtube EM/Mains

Max. lamp no. on MCB B type 10A — EM ballast without Comp. Cap.	70
Max. lamp no. on MCB B type 10A — EM ballast with Comp. Cap.	10
Max. lamp no. on MCB B type 16A — Mains	110
Max. lamp no. on MCB B type 16A — EM ballast without Comp. Cap.	110
Max. lamp no. on MCB B type 16A — EM ballast with Comp. Cap.	16
Ballast Compatibility	EM/Mains

Temperature

Ambient temperature range	-20°C to 45°C
T-Case maximum (nom.)	60 °C

Controls and Dimming

Dimmable	No
----------	----

Mechanical and Housing

Lamp Finish	Frosted
Bulb material	Plastic
Product length	1,500 mm
Bulb shape	T8

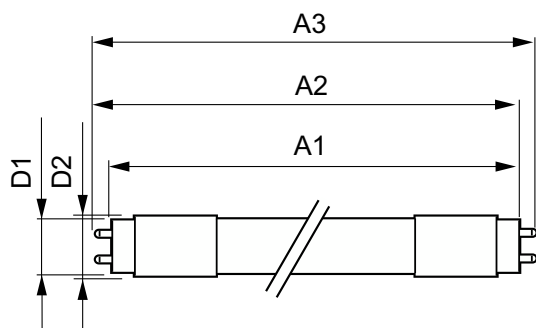
Approval and Application

Energy Efficiency Class	C
Energy-saving product	Yes
Approval marks	RoHS compliance TUV CE marking KEMA Keur certificate
Energy consumption kWh/1,000 hours	22 kWh
EPREL registration number	1206977

Product Data

Order product name	MAS LEDtube 1500mm UO 21.7W 840 T8
Full product name	MASTER LEDtube 1500mm UO 21.7W 840 T8
Full EOC	871951431664500
Order code	31664500
Material no. (12 NC)	929002998602
SAP numerator – quantity per pack	1
EAN/UPC – Product/Case	8719514316645
Numerator – packs per outer box	10
EAN/UPC - Case	8719514316652

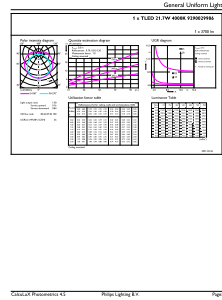
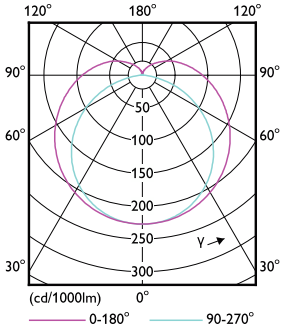
Dimensional drawing



Product	D1	D2	A1	A2	A3
MAS LEDtube 1500mm UO 21.7W 840 T8	25.8 mm	28 mm	1,498.8 mm	1,505.9 mm	1,513 mm

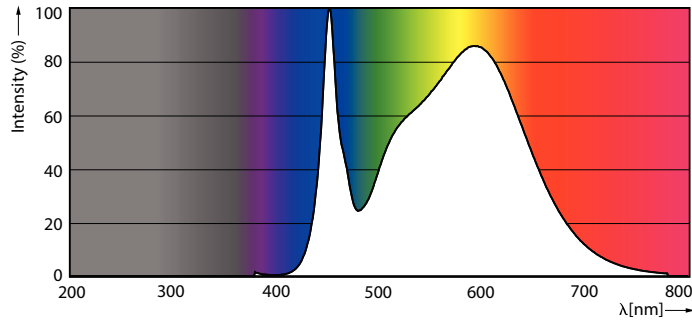
MASTER LEDtube EM/Mains

Photometric data



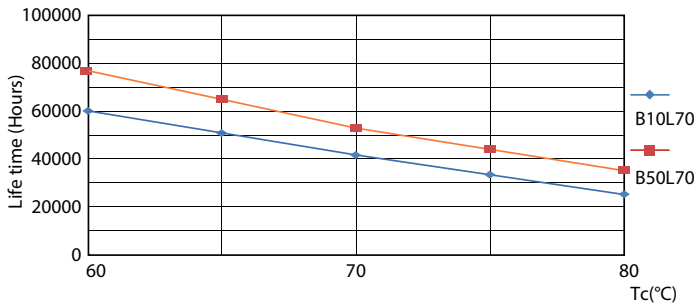
Light Distribution Diagram - MAS LEDtube 1500mm UO 21.7W 840 T8

General uniform lighting - MAS LEDtube 1500mm UO 21.7W 840 T8

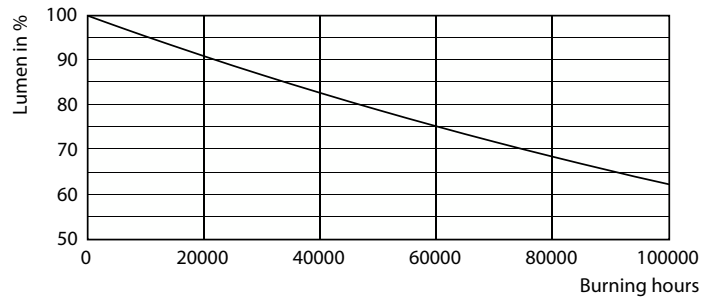


Spectral Power Distribution Colour - MAS LEDtube 1500mm UO 21.7W 840 T8

Lifetime



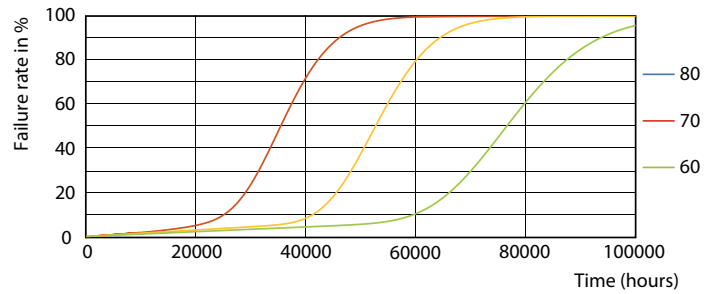
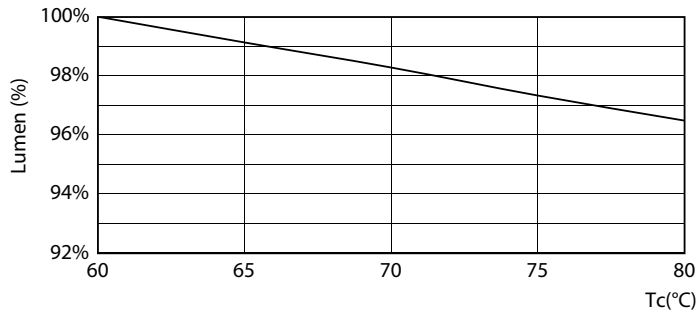
Life Expectancy Diagram - MAS LEDtube 1500mm UO 21.7W 840 T8



Lumen Maintenance Diagram - MAS LEDtube 1500mm UO 21.7W 840 T8

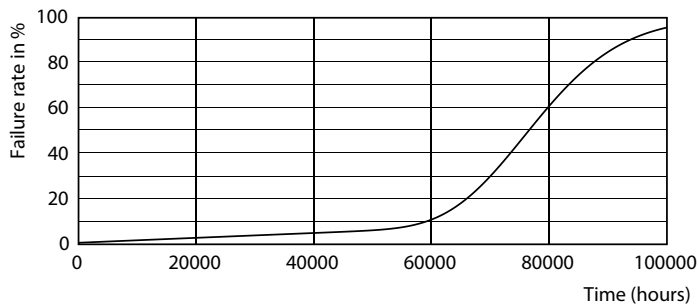
MASTER LEDtube EM/Mains

Lifetime



Lumen Maintenance Diagram - MAS LEDtube 1500mm UO 21.7W 840 T8

Life Expectancy Diagram - MAS LEDtube 1500mm UO 21.7W 840 T8



Life Expectancy Diagram - MAS LEDtube 1500mm UO 21.7W 840 T8

