



# MASTER LEDtube InstantFit HF T5



## Master LEDtube HF 600mm HE 7W 830 T5

The Philips MASTER LEDtube integrates an LED light source into a traditional fluorescent form factor. Its unique design creates a perfectly uniform visual appearance, which cannot be distinguished from traditional fluorescents. These T5 lighting tubes are the right choice for absolute performance and are designed to stand up to everyday conditions. Unparalleled savings, thanks to low energy consumption and an exceptionally long lifetime, make these T5 LED tubes the choice for every demanding applications.

### Product data

General Information		Photobiological safety according to EN 62471	
Cap base	G5	RG0	
Nominal lifetime	60,000 h	Operating and Electrical	
Switching Cycle	50,000	Input frequency	30 K to 100 K Hz
Lighting Technology	LED	Power Consumption	7 W
Flux measurement reference	Sphere	Lamp current (max.)	350 mA
		Lamp current (min.)	150 mA
		Starting time (nom.)	0.5 s
		Warm-up time to 60% light	0.5 s
		Power Factor (Fraction)	0.92
		Voltage (nom.)	40-70 V
		Ballast Compatibility	HF
		LED alternative to fluorescent lamp power	14 W
		Inrush current at mains	-
		Max. lamp no. on MCB B type 10A — Mains	-
		Max. lamp no. on MCB B type 10A – EM ballast without Compensation Capacitor.	-

# MASTER LEDtube InstantFit HF T5

Max. lamp no. on MCB B type 10A – EM ballast with Compensation Capacitor.	-
Max. lamp no. on MCB B type 16A – Mains	-
Max. lamp no. on MCB B type 16A – EM ballast without Compensation Capacitor.	-
Max. lamp no. on MCB B type 16A – EM ballast with Compensation Capacitor.	-

## Temperature

T-Case maximum (nom.)	50 °C
-----------------------	-------

## Controls and Dimming

Dimmable	Yes – Check ballast compatibility
----------	-----------------------------------

## Mechanical and Housing

Lamp Finish	Frosted
Bulb material	Glass
Product length	600 mm
Bulb shape	T5
Net Weight (Piece)	0.085 kg

## Approval and Application

Energy Efficiency Class	E
Energy-saving product	Yes
Approval marks	RoHS compliance KEMA Keur certificate

Energy consumption kWh/1,000 hours	7 kWh
EPREL Registration Number	1936620
CE mark	Yes
EU RoHS compliant	Yes
Ambient temperature range	-20 to +45 °C

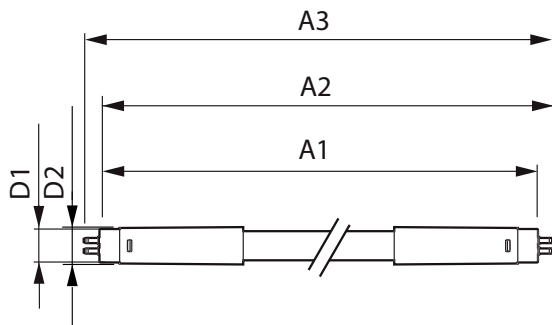
## Application Conditions

Can it be used in closed luminaires	Yes
-------------------------------------	-----

## Product Data

Order product name	MAS LEDtube HF 600mm HE 7W 830 T5
Full product name	Master LEDtube HF 600mm HE 7W 830 T5
Full EOC	872016930966100
Order code	30966100
Material no. (12 NC)	929003795102
Numerator – quantity per pack	1
EAN/UPC – Product/Case	8720169309661
Numerator – packs per outer box	10
EAN/UPC – Case	8720169309678

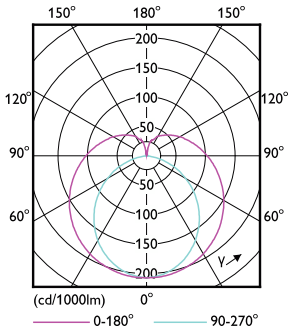
## Dimensional drawing



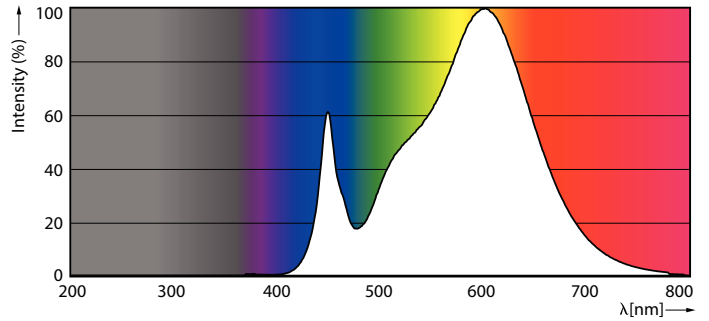
Product	D1	D2	A1	A2	A3
MAS LEDtube HF 600mm HE 7W 830 T5	15.7 mm	19 mm	549 mm	556 mm	563 mm

# MASTER LEDtube InstantFit HF T5

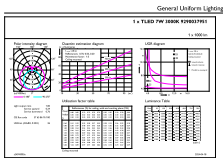
## Photometric data



Light Distribution Diagram - MAS LEDtube HF 600mm HE 7W 830 T5



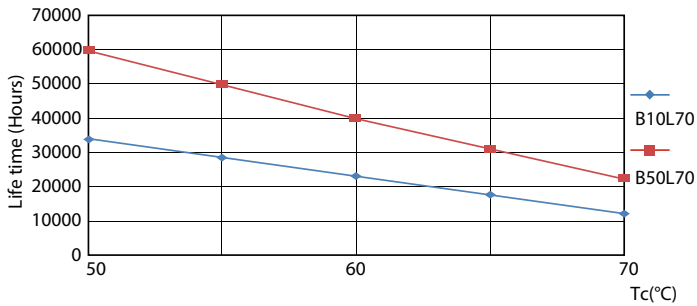
Spectral Power Distribution Colour - MAS LEDtube HF 600mm HE 7W 830 T5



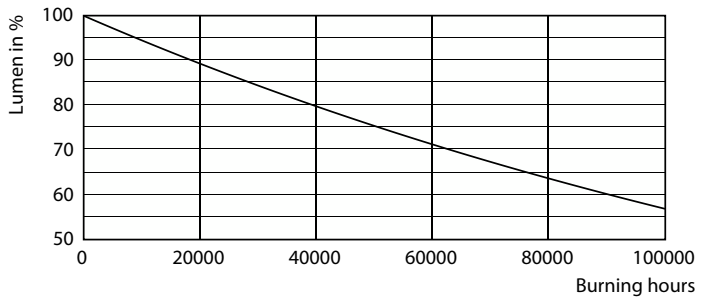
General Uniform Lighting  
T5 - 7W (7W (830K) (T5))  
Page 11

General uniform lighting - MAS LEDtube HF 600mm HE 7W 830 T5

## Lifetime



LEDtube 60K 5070 LifetimeVsTc-LED



Lumen Maintenance Diagram - MAS LEDtube HF 600mm HE 7W 830 T5

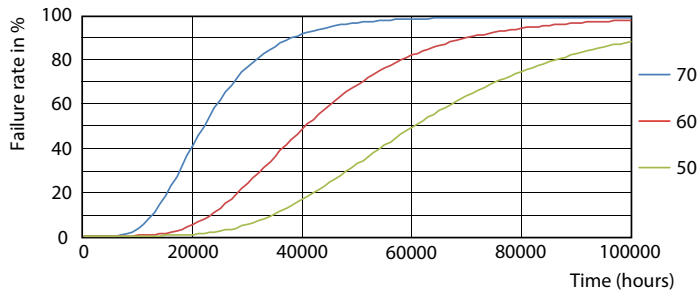
# MASTER LEDtube InstantFit HF T5

## Lifetime



Life Expectancy Diagram

Lumen Maintenance Diagram - MAS LEDtube HF 600mm HE 7W 830 T5



LEDtube 60K 5070 FailureRate-LED

